

Anti-MUC1 (pY1243) Antibody
Rabbit polyclonal antibody to MUC1 (pY1243)
Catalog # AP61379**Specification**

Anti-MUC1 (pY1243) Antibody - Product Information

Application	WB, IHC
Primary Accession	P15941
Other Accession	Q02496
Reactivity	Human, Mouse
Host	Rabbit
Clonality	Polyclonal
Calculated MW	122102

Anti-MUC1 (pY1243) Antibody - Additional Information**Gene ID** 4582**Other Names**

PUM; Mucin-1; MUC-1; Breast carcinoma-associated antigen DF3; Cancer antigen 15-3; CA 15-3; Carcinoma-associated mucin; Episialin; H23AG; Krebs von den Lungen-6; KL-6; PEMT; Peanut-reactive urinary mucin; PUM; Polymorphic epithelial mucin; PEM; Tumor-associated epithelial membrane antigen; EMA; Tumor-associated mucin; CD227

Target/Specificity

KLH-conjugated synthetic peptide encompassing a sequence within the C-term region of human MUC1 (pY1243). The exact sequence is proprietary.

Dilution

WB~~WB (1/500 - 1/1000), IH (1/50 - 1/200)
IHC~~1:100~500

Format

Liquid in 0.42% Potassium phosphate, 0.87% Sodium chloride, pH 7.3, 30% glycerol, and 0.09% (W/V) sodium azide.

Storage

Store at -20 °C. Stable for 12 months from date of receipt

Anti-MUC1 (pY1243) Antibody - Protein Information**Name** MUC1**Synonyms** PUM**Function**

The alpha subunit has cell adhesive properties. Can act both as an adhesion and an anti-adhesion protein. May provide a protective layer on epithelial cells against bacterial and enzyme attack.

Cellular Location

Apical cell membrane; Single-pass type I membrane protein. Note=Exclusively located in the apical domain of the plasma membrane of highly polarized epithelial cells After endocytosis, internalized and recycled to the cell membrane Located to microvilli and to the tips of long filopodial protusions [Isoform Y]: Secreted. [Mucin-1 subunit beta]: Cell membrane. Cytoplasm. Nucleus. Note=On EGF and PDGFRB stimulation, transported to the nucleus through interaction with CTNNB1, a process which is stimulated by phosphorylation. On HRG stimulation, colocalizes with JUP/gamma-catenin at the nucleus

Tissue Location

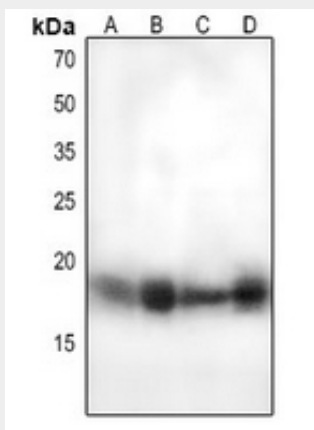
Expressed on the apical surface of epithelial cells, especially of airway passages, breast and uterus. Also expressed in activated and unactivated T-cells. Overexpressed in epithelial tumors, such as breast or ovarian cancer and also in non-epithelial tumor cells. Isoform Y is expressed in tumor cells only

Anti-MUC1 (pY1243) Antibody - Protocols

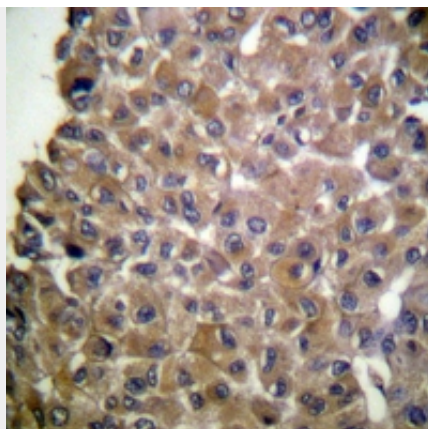
Provided below are standard protocols that you may find useful for product applications.

- [Western Blot](#)
- [Blocking Peptides](#)
- [Dot Blot](#)
- [Immunohistochemistry](#)
- [Immunofluorescence](#)
- [Immunoprecipitation](#)
- [Flow Cytometry](#)
- [Cell Culture](#)

Anti-MUC1 (pY1243) Antibody - Images



Western blot analysis of MUC1 (pY1243) expression in HEK293T (A), Hela (B), H446 (C), mouse lung (D) whole cell lysates.



Immunohistochemical analysis of MUC1 (pY1243) staining in human breast cancer formalin fixed paraffin embedded tissue section. The section was pre-treated using heat mediated antigen retrieval with sodium citrate buffer (pH 6.0). The section was then incubated with the antibody at room temperature and detected using an HRP conjugated compact polymer system. DAB was used as the chromogen. The section was then counterstained with haematoxylin and mounted with DPX.

Anti-MUC1 (pY1243) Antibody - Background

KLH-conjugated synthetic peptide encompassing a sequence within the C-term region of human MUC1 (pY1243). The exact sequence is proprietary.